



Ingham County

4-H Family News

October 9 2020



Tractor Supply Co. (TSC) Paper Clover October 7-18, 2020



National 4-H Council is going forward with the Fall 2020 Tractor Supply Co. (TSC) Paper Clover Promotion **Oct. 7-18, 2020**. During these dates, TSC customers can purchase a paper clover both **online** or **in stores** for \$1 to support their local 4-H program.

Promotion

- Due to the pandemic, **Michigan 4-H clubs are not to promote the campaign with in store activities** this year. (For example, there are no bake sales, dog washes, petting zoos, etc.)
- All promotion and marketing efforts must be 100% virtual – no exceptions.**

You may promote the campaign via email, [website](#), social media, etc. to let your local supporters know of this opportunity to support your county 4-H program. Feel free to simply share the Michigan 4-H Foundation (@mi4hfdtn) or Michigan 4-H (@Michigan4H) social posts during the campaign on your local social accounts.

- If you choose to shop at TSC, consider supporting 4-H by purchasing a clover at checkout online or in stores.
- We also encourage you to reach out by phone or email and say thank you to your local store manager for their participation in this campaign and support of 4-H.

Michigan State University is an affirmative action/equal opportunity employer. Michigan State University Extension programs and materials are open to all without regard to race, color, national origin, gender, gender identity, religion, age, height, weight, disability, political beliefs, sexual orientation, marital status, family status or veteran status. Issued in furtherance of MSU Extension work, acts of May 8 and June 30, 1914, in cooperation with the U.S. Department of Agriculture. Jeffrey W. Dwyer, Director, MSU Extension, East Lansing, MI 48824. This information is for educational purposes only. Reference to commercial products or trade names does not imply endorsement by MSU Extension or bias against those not mentioned. The 4-H Name and Emblem have special protections from Congress, protected by code 18 USC 707.

Ingham County 4H-
MSU Extension

Be sure to like and
follow us for the latest
4-H information.

Contact Us

Eric Dobbrastine
4-H Program Coordinator
dobbras1@msu.edu

Glenda Weiss
4-H Program Coordinator
weissgle@msu.edu

Lori Guy
Office Coordinator
lguy@ingham.org

Michigan State University Extension
4-H Youth Development
Ingham County
121 E. Maple Street
PO Box 319
Mason, MI 48854
Ph: 517.676.7207 • Fax: 517.676.7288
msue.ingham@county.msu.edu

[Ingham County 4-H](#)
<https://www.canr.msu.edu/ingham/4-h/>

[Facebook](#)
<https://www.facebook.com/Ingham4H>



LOCAL NEWS

2020-2021 4-H Reenrollment is Now Open!

The new enhanced 4honline is now ready for reenrollment. Please log into your [4HOnline](#) Family account to submit enrollment for each member of your family - participating Youth and Adults (*Adults only if a volunteer).

Go to <http://mi.4honline.com> and enter the email and password you created last year. If you've forgotten your password, select "**I forgot my password**" and follow the instructions. Once at your family homepage, work through each member's page to complete/update personal information, authorizations and project information. **PLEASE MAKE SURE CLUB AND PROJECT INFORMATION IS UP TO DATE!** Pay special attention to your "**Years in 4-H**" and be sure to add **each project** a member is/has been involved in.

MSU Extension recognizes that the COVID-19 pandemic and other associated factors have put a financial strain on many families. Therefore, we have **opted to waive** the Michigan 4-H participation fee of \$20 per person or \$60 per family for the 2020-21 4-H program year which begins September 1, 2020. Some events may continue to have registration fees. You will continue to register through 4-H Online, but no participation fees will be collected or expected next year.

If you are interested in supporting 4-H in lieu of paying participation fees, please contact your 4-H program coordinator for opportunities.



Community Leaders: You must reenroll in order to have access to your club's information. Once approved by County staff, your access will be restored.

4-H Volunteer Central

MSU Extension has a new volunteer management system, Volunteer Central. This system provides a platform to organize our Volunteer Selection Process for new volunteers, conduct our annual background check process, provide online training opportunities for volunteers, and to promote activities that need volunteer support with a convenient way to sign-up for shifts. New volunteers have been using the system since January. Now, all current MSU Extension volunteers have access to Volunteer Central and we've already created a profile for you. Using the instructions below, you'll need to edit and update your profile information.

In case you missed it, information was sent out to all volunteers in August. Please login and change your password, update any inaccurate information and add emergency contact information as this information was not part of our data transfer. You are also welcome to add a photo if you would like.

Volunteer Central does not replace 4-HOnline. 4-HOnline is our 4-H specific database for volunteers, youth and families. It will remain an important part of your volunteer role to be active in both Volunteer Central and 4-HOnline.

Thank you for volunteering with MSU Extension! Please reach out to Glenda at 676-7303 with any questions pertaining to Volunteer Central.

MICHIGAN STATE
UNIVERSITY

Extension

Investigating Food with Science

"Investigating Food with Science: The Science Behind Food Safety" an after school online program exploring how cooking is an experiment and baking is a science.

Wednesdays at 4 pm to 4:30 pm EDT

Oct. 14, 2020 How long can you hold your breath?

Oct. 21, 2020 Is chocolate a fruit?

Oct. 28, 2020 How many seeds in a pumpkin?

Nov. 4, 2020 How does grass turn into milk?

For more information and to register for these free online workshops visit
<https://events.anr.msu.edu/InvestigatingFoodwithScience/>

To join by phone, call in advance to register at 877-643-9882.



GET READY TO MAKE NOT JUST ANY GRILLED CHEESE SANDWICH BUT THE ULTIMATE GRILLED CHEESE SANDWICH! JOIN US FOR ANOTHER EPISODE OF 4-H IN THE KITCHEN LIVE TO LEARN THE SECRETS TO THIS MOST EXCELLENT SANDWICH!

October 17, 2020 | 3:00 pm

<https://events.anr.msu.edu/UltimateGrilledCheese/>



MICHIGAN STATE
UNIVERSITY | Extension

Important Changes to 4-H Financial Manuals for Volunteers & Treasurers

FINANCIAL MANUAL FOR 4-H VOLUNTEERS:

Leading the Way to Financial Accountability



The 4-H Financial Manuals for Volunteers and Treasurers support 4-H volunteers and adult and youth treasurers in their roles managing 4-H funds.

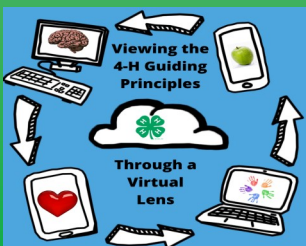
Small revisions and updates to these books were made in 2020. The online PDF versions of the manuals contain the changes. However, if you have a printed or hard copy version that does not contain the 2020 changes, a one-page document is available online that notes all the important content adjustments. It is recommended that you print this resource and store it in your manual for quick reference.

Download the 2020 changes resource at www.canr.msu.edu/resources/4_h_financial_management_toolkit. For more information, please contact your local county staff member.

Guidelines for Positive Youth Development Virtually

As Michigan 4-H staff, volunteers and youth continue to practice safe social distancing, 4-H programs have moved online and many 4-H clubs are connecting virtually. To help both 4-H staff and volunteers view the 4-H Guiding Principles through a virtual lens, MSU Extension recently developed "Michigan 4-H Guiding Principles for Positive Youth Development: Virtual Programming Focus." This resource is a great tool for adults interacting with 4-H'ers to review as they consider their best ways to optimize 4-H programming for the online world.

View the Michigan 4-H Guiding Principles for Positive Youth Development online at www.canr.msu.edu/resources/michigan-4-h-guiding-principles-for-positive-youth-development-virtual-programming-focus.



MI 4-H STATE YOUTH LEADERSHIP COUNCIL



Applications Due October 31
<https://events.anr.msu.edu/sylc20/>



ENHANCE YOUR 4-H SHOOTING SPORTS CLUB AND PROJECT MEETINGS



Series of FREE Shooting Sports Workshops
 featuring Olympic Athletes and USA Top Shooters

SHOTGUN • RIFLE • ARCHERY • PISTOL

6:30-7:30 pm PST

OCT 6, 13, 20 & 27 NOV 3, 10 & 17 DEC 1

Register for these webinars through your Zoom account:
https://wsu.zoom.us/webinar/register/WN_7KOfRuI9TTmOUewf7mxLuA

Sponsored by Washington State 4-H Shooting Sports



Questions?
dan.white@wsu.edu
a.hernandez-hall@wsu.edu



The mission of 4-H is to empower youth to reach their full potential, working and learning in partnership with caring adults. Extension programs are open to all without discrimination. Evidence of noncompliance may be reported through your local Extension office.





JOIN US ONLINE!

4-H MINECRAFT SPIN CLUB

*An introduction to computer coding through the world of
Minecraft! Open to all youth age 8 to 12.*

Choose one SPIN Club Opportunity
Sign up TODAY!

Monday, September 21-25, 10-11:15am

Register: <https://bit.ly/34FkJII>

Monday, October 19-23, 4-5:15pm

Register: <https://bit.ly/2YImyuu>

MICHIGAN STATE
UNIVERSITY | Extension

5



MICHIGAN STATE
UNIVERSITY | Extension



ADULTING 101-FALL SERIES

High School Youth

October 12, 19, 26

4:00 PM

Register: <https://events.anr.msu.edu/Adult101Fall/>

For info: hydemich@msu.edu

Adulting 101

Our Fall Series topics
include the following:

October 12th
Interview for Success

October 19th
Household Tasks

October 26th
Developing a Spending
Plan

Classes will start at 4:00
pm. Register [https://
events.anr.msu.edu/
Adult101Fall/](https://events.anr.msu.edu/Adult101Fall/)

4-H Jedi Training

A new 4-H Jedi Training, just for teens. Open to youth ages 13 and up, this club is guaranteed to be loaded with Star Wars clips and discussion. Each session explores a new skill of the Jedi through mindfulness, physical activities, and at home challenges. Our last sessions will be the Jedi trials, where after completion you will become a Jedi knight. Join us Tuesday evenings on zoom, October 6 - November 3, 6:00-7:00pm EST. To register, visit: <https://events.anr.msu.edu/JediTeens/>. For additional information, please contact Jessica Price at brown130@msu.edu or Susan Kirkman at kirkmans@msu.edu.



 **4-H GROWS HERE**

MICHIGAN STATE UNIVERSITY | Extension

TBA ISD Traverse Bay Area Intermediate School District

FARM TO MARKET!

Virtual farm tour followed by a farmer Q&A - live via Zoom

FREE | 10 AM ET | FOR ALL AGES!

OCT 8 : BAKKER'S ACRES (APPLES & APPLE CRUNCH DAY)

OCT 15: STILL POINT MARKET (MUSHROOMS)

OCT 22: HILLSIDE HOMESTEAD (CHICKENS)

OCT 29: 9 BEAN ROWS (PUMPKINS)

Must be pre-registered to participate.

Register at: <https://events.anr.msu.edu/farmtomarket>

Mackinac & Luce County 4-H Presents

JEDI TRAINING FOR TEENS

Do you have what it takes to harness the force and become a guardian of peace and justice? Explore mindfulness, physical wellness, and what it means to be a good Jedi. Join 4-H as you embrace the ways of THE FORCE!

**OPEN TO YOUTH AGES 13+
TUESDAYS OCTOBER 6TH - NOVEMBER 3RD
FROM 6 - 7PM EST | VIA ZOOM**

To Register visit:
<https://events.anr.msu.edu/JediTeens/>

MICHIGAN STATE UNIVERSITY | Extension

 **4-H GROWS HERE**

MSU Extension programs and material are open to all without regard to race, color, national origin, gender, gender identity, religion, age, height, weight, disability, political beliefs, sexual orientation, marital status, family status, or veteran status.



4-H Fall Fun with Junk Drawer Robotics



What: Junk Drawer Robotics club via Zoom

Where: Zoom online meeting

Who: Michigan youth ages 8-19 (inclusive group meetings for youth with disabilities)

When: Tuesday/Thursday November 10,12,17,19; 4-5pm each day

Cost: \$20

Registration: <https://events.anr.msu.edu/FallJDR/>

Limited to 30 youth; Register by 10/26/2020



MSU is an affirmative-action, equal-opportunity employer. Michigan State University Extension programs and materials are open to all without regard to race, color, national origin, gender, gender identity, religion, age, height, weight, disability, political beliefs, sexual orientation, marital status, family status or veteran status.

MICHIGAN STATE
UNIVERSITY

Extension



Join Us for Pippin's Pantry

October 26 thru January 4, 2021 | Every Other Monday @ 4:30p

REGISTER HERE: https://events.anr.msu.edu/Pippins_Pantry/

MICHIGAN STATE
UNIVERSITY

Extension



7

Do you love holiday baking? Do you have a dog or just love dogs in general? Have you ever thought about what you're feeding them from the holiday table might not be safe for them to eat? Don't worry! Pippin is here to help! Join Pippin and his momma, Benzie County 4-H PC Ali Olson, as they open Pippin's Pantry to share their knowledge (verified by trusted, licensed DVMs) about what holiday treats are safe and what should be avoided. Then they will share a dog safe, tasty, holiday themed treat for the week and walk you through the making and baking of the treat!



MICHIGAN STATE UNIVERSITY | Extension

FLOUR TORTILLA MAKING 101

TORTILLA DE HARINA PARA HACER 101

LEARN HOW TO MAKE FLOUR TORTILLAS
APRENDE A HACER TORTILLAS DE HARINA.

In this class participants will learn how to make fresh home-made flour tortillas from scratch.

DATE: November 1, 2020

TIME: 3:00 PM

COST: FREE

TO REGISTER:

<https://events.anr.msu.edu/FLOURTORTILLAMAKING101/>



Health & Community Services

The first recorded use of tortillas dates to 10,000 BC, and were made from corn. According to legend, tortillas were first made by a Mayan peasant for his hungry king.



When the Spanish arrived in 1490-1519, they discovered native inhabitants like the Aztecs and others all ate some sort of bread made from maize (corn). The Spanish Conquistadors quickly spread news of this strange new bread. It wasn't long before wheat was brought over to the New World from Spain and the birth of flour tortillas happened.

MSU is an affirmative-action, equal-opportunity employer. Michigan State University Extension programs and materials are open to all without regard to race, color, national origin, gender, gender identity, religion, age, height, weight, disability, political beliefs, sexual orientation, marital status, family status or veteran status.

NO COST!

AGES: 13-19



MICHIGAN STATE UNIVERSITY | Extension

-Presents-

VIRTUAL CLUE



10. 29. 2020 | 7:00 pm EST

Join as an individual
or member of a team



MSU is an affirmative-action, equal-opportunity employer. Michigan State University Extension programs and materials are open to all without regard to race, color, national origin, gender, gender identity, religion, age, height, weight, disability, political beliefs, sexual orientation, marital status, family status or veteran status.



Join Us Online

VIRTUAL LEARNING TOOLS WEBSITE

Parents, Teachers, and Homeschool Families

<https://www.extension.msu.edu/virtual-learning-tools>

MICHIGAN STATE UNIVERSITY | Extension



Want to learn how to run an effective business meeting?

MCEA will be hosting a Parliamentary Procedure training for all members of the MSU Extension Professional Associations (MAE4-YS, ESP, CNRDA, MAEA & MEAFCS)

October 15, 2020

1:30 p.m. – 3:00 p.m.

Registration through Events Management.

<https://events.anr.msu.edu/ParliProTrainingMCEA/>

Registration open through October 14th!

Questions???

Contact Janelle Stewart at 517-403-1026 or stewa191@msu.edu

Parliamentary Procedure

≡ a set of rules for conduct at meetings that allows everyone to be heard and to make decisions.

MICHIGAN STATE UNIVERSITY | Extension

MSU is an affirmative-action, equal-opportunity employer. Michigan State University Extension programs and materials are open to all without regard to race, color, national origin, gender, gender identity, religion, age, height, weight, disability, political beliefs, sexual orientation, marital status, family status or veteran status.

4-H Events and Workshops

October 5: MSU Tollgate Farm Secret Life of Trees Interactive Weekly Series

Online

Explore the secret life of trees in this 5-week series that occurs each Monday. Interact with MSU Tollgate Farm staff, visit the fields and gardens, engage in STEM challenges, learn how we are a part of the same ecosystem as the trees and how we can give back.

<https://www.canr.msu.edu/events/msu-tollgate-farm-fall-virtual-secret-life-of-trees-interactive-weekly-series>

October 6: 4-H Jedi Training for Teens

Online via Zoom

Do you have what it takes to harness the force and become a guardian of peace and justice? Find your inner harmony with this 5-week series that will occur each Tuesday.

<https://www.canr.msu.edu/events/4-h-jedi-training-for-teens>

October 8: MSU Tollgate Farm Follow The Nutrient Trail Interactive Weekly Series

Online

Follow the nutrient trail of consumers, producers and decomposers as you meet Tollgate's goats, chickens and worms during this 5-week series that occurs each Thursday. Students will interact with staff and question, hypothesize, experiment, analyze data, conclude and question again through hands-on STEAM challenges.

<https://www.canr.msu.edu/events/msu-tollgate-farm-fall-virtual-follow-the-nutrient-trail-interactive-weekly-series>

October 10: 4-H Coding Weekend Workshop - An Intro to Coding

Online via Zoom

Students will spend four days (weekends of October 10-11 and 17-18) learning how to code and develop an application to solve a technical problem that they define. This workshop is for any high school students of all coding skill levels and experience.

<https://www.canr.msu.edu/events/4-h-coding-weekend-workshops-an-intro-to-coding>

October 12: Adulting 101

Online via Zoom

The exciting Adulting 101 series is offered to high school youth to help prepare for life on their own. This 3-week series will occur each Monday and cover Interviews for Success, Household Tasks, and Making a Spending Plan.

<https://www.canr.msu.edu/events/adulting-101-fall-series-mondays>

October 17: 4-H in the Kitchen Live! Ultimate Grilled Cheese

Online via Zoom

Participants, ages 5-19, will learn how to make Ultimate Grilled Cheese Sandwiches using low and non-fat ingredients. Participants will receive the recipe two days in advance.

<https://www.canr.msu.edu/events/4-h-in-the-kitchen-live-ultimate-grilled-cheese>

For the most up-to-date events listing, go to <http://4h.msue.msu.edu/events>.

4-H scholarships available



Outstanding Michigan 4-H members who are involved at county, regional, state, national or international levels are eligible to apply for Michigan 4-H scholarships to help fund their college experience.

A number of scholarship opportunities exist, ranging in value from \$500 to \$2,500. All applications are due by November 1.

Learn more and access applications materials at: www.canr.msu.edu/4_h_scholarships_and_recognition_program/4_h_scholarships.

CLUB CORNER



REMINDERS:

Year End Financials—Your club's Year End Financial Packet is **DUE October 18.**

Please email, mail or drop off at the 4-H Office. The Hilliard Building is locked but call Lori at 676-7207 and she will meet you at the front door. If you have questions or need help in completing the forms, please contact Eric Dobbrastine at (517) 676-7300.

4-H Volunteer Reenrollment

Go to MSU Extension [Volunteer Central](https://msu.samaritan.com/custom/502/volunteer_home) (https://msu.samaritan.com/custom/502/volunteer_home) and click "Login" which is located on the upper right hand side of the web page

Your User ID: [email address]

Password: Pa\$\$1234

Click Edit Profile

Review your information and update anything that is inaccurate

Replace placeholder Emergency contact information

Upload a photo if you would like

Change your password and save it. You will need this annually when you consent to the background check and if you want to explore volunteer opportunities and shifts as this feature gets used more in the future.

Click Update Form

Currently there is one training module available, Welcome to MSU Extension. This is not required for current volunteers, but we welcome you to review this overview of our organization if you are interested. More training modules will be added in the future and we would encourage you to check back regularly to participate in the modules.

Volunteer Central does not replace 4-HOnline. 4-HOnline is our 4-H specific database for volunteers, youth and families. It will remain an important part of your volunteer role to be active in both Volunteer Central and 4-HOnline.

Thank you for volunteering with MSU Extension! Please reach out to Glenda at 676-7303 with any questions pertaining to Volunteer Central.

4-H Member Reenrollment

Please encourage your members to log into their [4HOnline](https://v2.4honline.com/) (<https://v2.4honline.com/>) family account to submit enrollment for each member of your family - participating Youth and Adults (*Adults only if a volunteer).

MSU Extension has **opted to waive** the Michigan 4-H participation fee of \$20 per person or \$60 per family for the 2020-21 4-H program year which begins September 1, 2020. Some events may continue to have registration fees. You will continue to register through 4-H Online, but no participation fees will be collected.

This is the database we use to disseminate information to our members/leaders so it is important that all members and leaders are reenrolled.